



**NORTH AMERICAN
FIRE HOSE
CORPORATION**



Industrial Products



The difference is...***your*** margin of safety.



The difference is...*your* margin of safety.

NORTH AMERICAN FIRE HOSE (NAFH) is the industry’s most experienced manufacturer of innovative fire hose products. We’re proud to be an American manufacturer of custom municipal, forestry, and industrial hoses. Our top priority is the safety of firefighters and others who depend upon the performance of these premium lines of fire and industrial hose. We never forget who we protect. Our mission is to provide the highest quality products at competitive prices along with the most responsive level of customer service possible.

NAFH was established in 1992 in Santa Maria, CA by Joseph Aubuchon and his son, Michael. Prior to establishing the company, both Joe and Mike were responsible for manufacturing, quality control and product development with another fire hose manufacturer. Together, they accumulated a total of over 100 years in the fire hose manufacturing industry. In 2009, Mike acquired the family business and currently operates the company.

At NAFH, quality is not just a buzz word. We use only the highest quality raw materials available to manufacture our hose products. Our equipment and processes are designed to produce premium, high quality, fire fighting and industrial products. Our facility is one of the most modern fire hose manufacturing plants in the world. Our equipment is state of the art and includes the latest weaving and extrusion technology. We meet or exceed all requirements of fire hose industry standards, including NFPA, Underwriters Laboratory, Factory Mutual, U.S. Forest Service, Military, U.S. Coast Guard, Mine Safety and Health Administration specifications and standards.

For all of these reasons, we know you'll agree. The difference is... your margin of safety.

Mike Aubuchon

Mike Aubuchon
President / CEO

Table of Contents

Industrial Fire Hose Products.....	4
HD-Mill™.....	4
P-300-S™.....	4
P-500-S™.....	5
P-600-S™.....	5
PR-500™.....	6
Double Jacket Polyester Products.....	7
IA-600 Lite™.....	7
IA-600 UL/FM™.....	7
IA-800™.....	8
IAP-800™.....	8
Nitrile Rubber Products.....	9
IND-500™.....	9
IND-600™.....	9
Large Diameter Hose (LDH) Products.....	10
IAP-600 LDH™.....	10
IA-600 LDH™.....	11
Forestry / Wildland Products.....	12
Outback 600™.....	12
Outback 600 HD™.....	12
NAFH-187™ Type I.....	13
NAFH-187™ Type II.....	13
Military Hose Options.....	14
Mil-H-24606™ EPDM Rubber Lining.....	14
Mil-H-24606™ Polyurethane (TPU) Lining.....	14
Options.....	15
Ultra-Shield™ Coating.....	15
Couplings.....	16

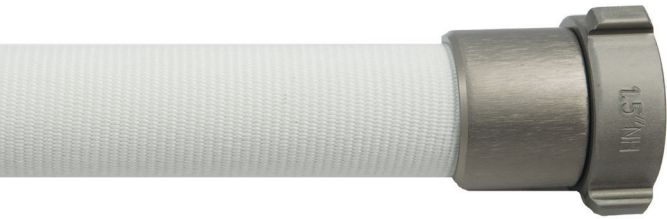
HD-Mill™

EPDM Rubber Lining / Polyester Single Jacket

HD-MILL™ DISCHARGE HOSE FEATURES

- **Poly-Cord™** ring spun polyester warp yarns are combined with filament polyester filler yarns
- The EPDM rubber lining is unaffected by Ozone deterioration.
- The **Dura-Bond™** vulcanized adhesion system, which creates both a mechanical and chemical bond between the EPDM lining and the jacket, reduces the probability of delamination as is experienced with competitive adhesive bonded rubber lined constructions
- Immune to the effects of mildew and rot, requiring less maintenance after use
- Hose made in the USA

Available in 50, 75 and 100 foot lengths



* 250 PSI acceptance test pressure rating-not rated for service test/acceptance/burst test pressure requirements of NFPA 1961.

HOSE SIZE	SPECIFICATION NUMBER	ACCEPTANCE TEST PSI	SERVICE TEST PSI	BOWL SIZE	WEIGHT PER 50' UNCPLD
1"	HD-MILL	250 PSI*	NA	1 1/4"	8 lbs.
1 1/2"	HD-MILL	250 PSI*	NA	1 3/4"	10.5 lbs.
2"	HD-MILL	250 PSI*	NA	2 5/16"	13 lbs.
2 1/2"	HD-MILL	250 PSI*	NA	2 13/16"	18.5 lbs.
3"	HD-MILL	250 PSI*	NA	3 1/4"	23 lbs.
4"	HD-MILL	250 PSI*	NA	4 5/16"	25 lbs.

P-300-S™

EPDM Rubber Lining / Polyester Single Jacket

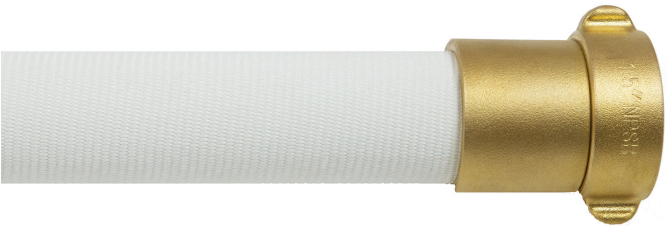
P-300-S™ FEATURES

- **Poly-Cord™** ring spun polyester warp yarns are combined with filament polyester filler yarns
- The EPDM rubber lining is unaffected by Ozone deterioration.
- It is designed for Emergency Fire Protection with water pressures not exceeding 135 PSI per NFPA 1961
- Immune to the effects of mildew and rot, requiring less maintenance after use
- The **Dura-Bond™** vulcanized adhesion system, which creates both a mechanical and chemical bond between the EPDM lining and the jacket reduces the probability of delamination as is

experienced with competitive adhesive bonded rubber lined constructions

- Hose made in the USA

Available in 50, 75 and 100 foot lengths



**Available with Factory Mutual and Underwriter's Label

HOSE SIZE	SPECIFICATION NUMBER	ACCEPTANCE TEST PSI	SERVICE TEST PSI	BOWL SIZE	WEIGHT PER 50' UNCPLD
1 1/2"	P-300-S**	300 PSI *	150 PSI	1 3/4"	11 lbs.
2 1/2"	P-300-S**	300 PSI *	150 PSI	2 13/16"	21 lbs.

P-500-S™

EPDM Rubber Lining / Polyester Single Jacket

P-500-S™ FEATURES

- **Poly-Cord™** ring spun polyester warp yarns are combined with filament polyester filler yarns
- The EPDM rubber lining is unaffected by Ozone deterioration.
- The result is a very strong, flexible "Tuff" hose with good heat and chemical resistance.
- It is designed for Emergency Fire Protection with water pressures not exceeding 225 PSI per NFPA 1961.
- Immune to the effects of mildew and rot, requiring less maintenance after use
- The **Dura-Bond™** vulcanized adhesion system, which creates both a mechanical and chemical bond between the

EPDM lining and the jacket reduces the probability of delamination as is experienced with competitive adhesive bonded rubber lined constructions

- Hose made in the USA

Available in 50, 75 and 100 foot lengths



** Available with Factory Mutual and Underwriter's Label

HOSE SIZE	SPECIFICATION NUMBER	ACCEPTANCE TEST PSI	SERVICE TEST PSI	BOWL SIZE	WEIGHT PER 50' UNCPLD
1"	P-500-S	500 PSI	250 PSI	1 1/4"	8 lbs.
1 1/2"	P-500-S**	500 PSI	250 PSI	1 3/4"	11 lbs.
2"	P-500-S	500 PSI	250 PSI	2 5/16"	15 lbs.
2 1/2"	P-500-S**	500 PSI	250 PSI	2 13/16"	21 lbs.

P-600-S™

EPDM Rubber Lining / Polyester Single Jacket

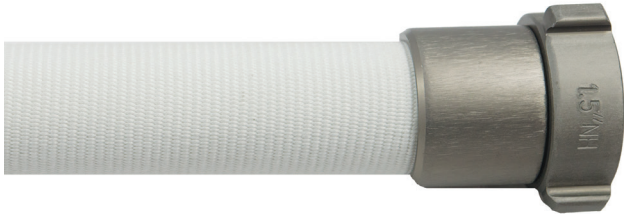
P-600-S™ FEATURES

- **Poly-Cord™** ring spun polyester warp yarns are combined with filament polyester filler yarns
- The EPDM rubber lining is unaffected by Ozone deterioration.
- The result is a very strong, flexible "Tuff" hose with good heat and chemical resistance.
- It is designed for Emergency Fire Protection with water pressures not exceeding 270 PSI per NFPA 1961.
- Immune to the effects of mildew and rot, requiring less maintenance after use
- The **Dura-Bond™** vulcanized adhesion system, which creates both a mechanical and chemical bond between the

EPDM lining and the jacket reduces the probability of delamination as is experienced with competitive adhesive bonded rubber lined constructions

- Hose made in the USA

Available in 50, 75 and 100 foot lengths



**Available with Factory Mutual

HOSE SIZE	SPECIFICATION NUMBER	ACCEPTANCE TEST PSI	SERVICE TEST PSI	BOWL SIZE	WEIGHT PER 50' UNCPLD
1 1/2"	P-600-S **	600 PSI	300 PSI	1 3/4"	11 lbs.
2 1/2"	P-600-S **	600 PSI	300 PSI	2 13/16"	21 lbs.

PR-500™

Polyurethane (TPU) Lining / Filament Polyester Single Jacket

POLY-RACK 500™ FEATURES

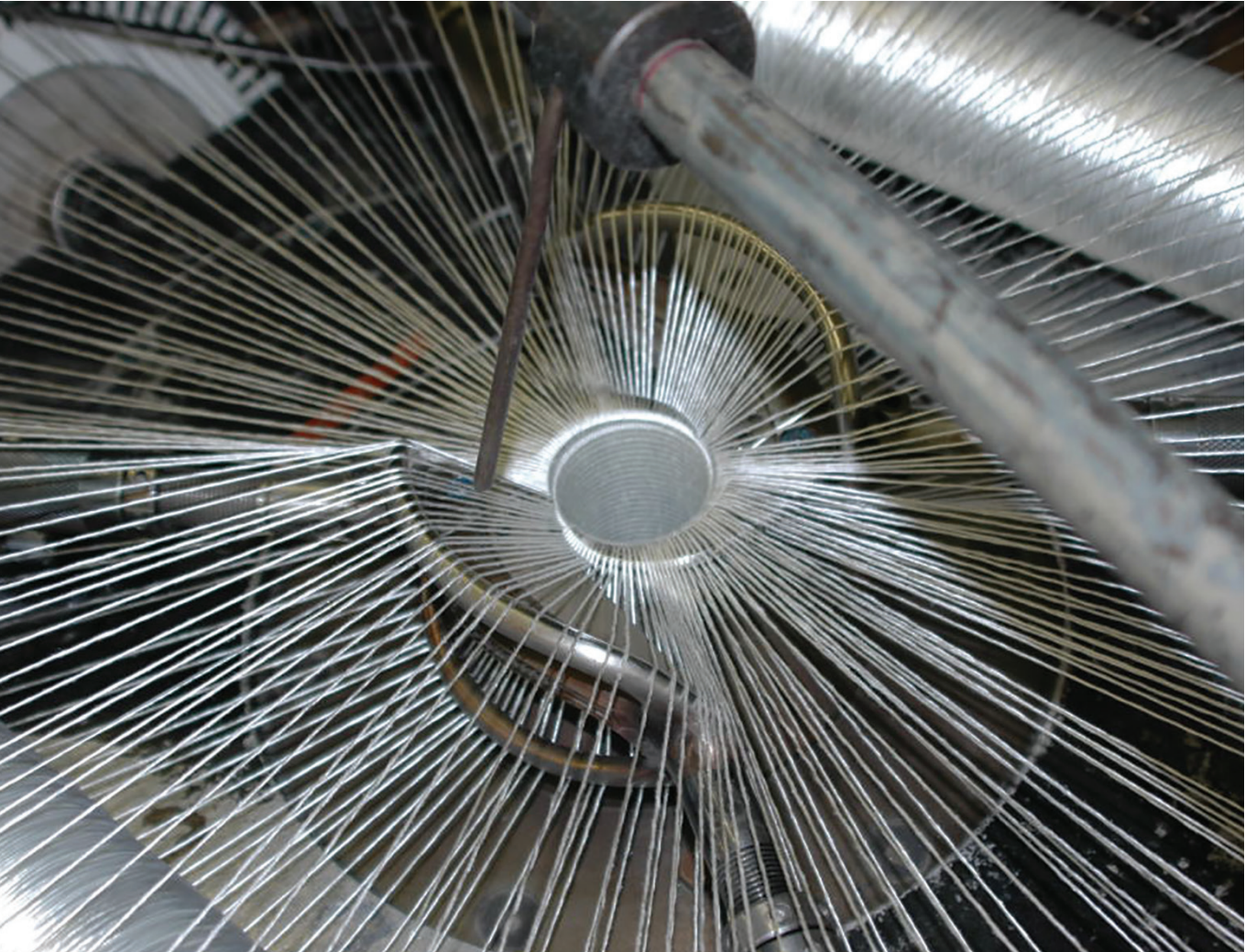
- Synthetic filament polyester wrap and filler yarns are unaffected by the effects of mildew and rot, requiring less maintenance after use.
- The **Dura-Thane™** polyurethane inner lining is extremely strong and durable, while maintaining a lightweight and compact profile
- **Poly-Rack 500™** will replace unlined hose foot for foot on existing storage devices.
- It is designed for Emergency Fire Protection with water pressures not exceeding 225 PSI per NFPA 1961.
- Hose made in the USA

Available in 50, 75 and 100 foot lengths



* Acceptance Test Pressure is 300 PSI for UL Labeled Product ** Available with Factory Mutual and Underwriter's Label

HOSE SIZE	SPECIFICATION NUMBER	ACCEPTANCE TEST PSI	SERVICE TEST PSI	BOWL SIZE	WEIGHT PER 50' UNCPLD
1½"	PR-500**	500 PSI*	250 PSI	1 11/16"	5 lbs.
2½"	PR-500	500 PSI	250 PSI	2 13/16"	10 lbs.



IA-600 Lite™

EPDM Rubber Lining / Polyester Double Jacket

INDUSTRIAL ATTACK-600 LITE™ FEATURES

- **Poly-Cord™** ring spun polyester warp yarns are combined with filament polyester filler yarns
- Available either plain / uncoated "natural" white, or with our optional **Ultra-Shield™** high-performance polyurethane coating applied to seal each and every fiber in the bundle, further improving the abrasion resistance, reducing moisture and chemical absorption, and providing vivid color-coded identification
- The EPDM rubber lining is unaffected by Ozone deterioration, and is one component in the **Friction Fighter System™**, creating an extremely smooth waterway surface, thereby reducing friction loss and improving nozzle performance
- The **Dura-Bond™** vulcanized adhesion system, which creates both a mechanical and chemical bond between the EPDM lining and the jacket, reduces the probability of delamination as is experienced with competitive adhesive bonded rubber lined constructions

- The result is a very strong, flexible, and "Tuff" hose, with good heat and chemical resistance
- Couplings are imported and available in aluminium or brass
- Hose is made in USA

Available in 50, 75 and 100 foot lengths



HOSE SIZE	SPECIFICATION NUMBER	ACCEPTANCE TEST PSI	SERVICE TEST PSI	BOWL SIZE	WEIGHT PER 50' UNCPLD
1½"	IA-600	600 PSI	300 PSI	1 15/16"	15 lbs.
2½"	IA-600	600 PSI	300 PSI	3"	27 lbs.
3"	IA-600	600 PSI	300 PSI	3 17/32"	34 lbs.

IA-600 UL/FM™

EPDM Rubber Lining / Polyester Double Jacket

INDUSTRIAL ATTACK-600 UL/FM™ FEATURES

- **Poly-Cord™** ring spun polyester warp yarns are combined with filament polyester filler yarns
- Available either plain / uncoated "natural" white, or with our optional **Ultra-Shield™** high-performance polyurethane coating applied to seal each and every fiber in the bundle, further improving the abrasion resistance, reducing moisture and chemical absorption, and providing vivid color-coded identification
- The EPDM rubber lining is unaffected by Ozone deterioration, and is one component in the **Friction Fighter System™**, creating an extremely smooth waterway surface, thereby reducing friction loss and improving nozzle performance
- The **Dura-Bond™** vulcanized adhesion system, which creates both a mechanical and chemical bond between the EPDM lining and the jacket, reduces the probability of delamination as is experienced with competitive adhesive bonded rubber lined constructions

- The result is a very strong, flexible, and "Tuff" hose, with good heat and chemical resistance
- Couplings are imported and available in aluminium or brass
- Hose is made in USA

Available in 50, 75 and 100 foot lengths



** Available With Factory Mutual and Underwriter's Label

HOSE SIZE	SPECIFICATION NUMBER	ACCEPTANCE TEST PSI	SERVICE TEST PSI	BOWL SIZE	WEIGHT PER 50' UNCPLD
1½"	IA-600 **	600 PSI	300 PSI	1 15/16"	16 lbs.
2½"	IA-600 **	600 PSI	300 PSI	3"	29 lbs.

IA-800™

EPDM Rubber Lining / Polyester Double Jacket

INDUSTRIAL ATTACK-800™ FEATURES

- **Poly-Cord™** ring spun polyester warp yarns are combined with filament polyester filler yarns
- Available either plain/uncoated “natural” white, or with our optional **Ultra-Shield™** high-performance polyurethane coating applied to seal each and every fiber in the bundle, further improving the abrasion resistance, reducing moisture and chemical absorption, and providing vivid color-coded identification
- The EPDM rubber lining is unaffected by Ozone deterioration, and is one component in the **Friction Fighter System™**, creating an extremely smooth waterway surface, thereby reducing friction loss and improving nozzle performance

** Available with Factory Mutual and Underwriter’s Label

HOSE SIZE	SPECIFICATION NUMBER	ACCEPTANCE TEST PSI	SERVICE TEST PSI	BOWL SIZE	WEIGHT PER 50’ UNCPLD
1”	IA-800	800 PSI	400 PSI	17/16”	12.5 lbs.
1½”	IA-800**	800 PSI	400 PSI	115/16”	16.5 lbs.
1 3/4”	IA-800	800 PSI	400 PSI	21/8”	20 lbs.
2”	IA-800	800 PSI	400 PSI	27/16”	21.5 lbs.
2 1/2”	IA-800**	800 PSI	400 PSI	3”	29.5 lbs.
3”	IA-800	800 PSI	400 PSI	317/32”	37.5 lbs.



- **The Dura-Bond™** vulcanized adhesion system, which creates both a mechanical and chemical bond between the EPDM lining and the jacket, reduces the probability of delamination as is experienced with competitive adhesive bonded rubber lined constructions
- The result is a very strong, flexible, and “Tuff” hose, with good heat and chemical resistance
- Couplings are imported and available in aluminium or brass
- Hose is made in USA

Available in 50, 75 and 100 foot lengths

IAP-800™

Polyurethane (TPU) Lining / Polyester Double Jacket

IAP 800™ FEATURES

- **Poly-Cord™** ring spun polyester warp yarns are combined with filament polyester filler yarns
- Available either plain / uncoated “natural” white, or with our optional **Ultra-Shield™** high-performance polymeric coating applied to seal each and every fiber in the bundle, further improving the abrasion resistance, reducing moisture and chemical absorption, and providing vivid color coded identification
- The **Dura-Thane™** polyurethane inner lining is extremely light weight and compact, and is a National Sanitation Foundation (NSF 60) approved material for safely conveying drinking water
- The **Friction Fighter System™** creates an extremely smooth waterway surface, thereby significantly reducing friction loss and improving flow characteristics
- With less weight and reduced coil diameters, folds more tightly into high rise hose packs and requires less hose bed



- space, while at the same time providing more maneuverability and flexibility than traditional hose types
- A higher burst strength resulting from the double jacket construction provides more pressure capability, maneuverability and ease of handling than nitrile rubber-covered single reinforcing jacket hose.
- The result is a very strong and flexible hose, with good heat and chemical resistance, along with superior flow characteristics
- Couplings are imported and available in aluminium or brass
- Hose is made in USA

Available in 50, 75 and 100 foot lengths

**Available with Factory Mutual Label

HOSE SIZE	SPECIFICATION NUMBER	ACCEPTANCE TEST PSI	SERVICE TEST PSI	BOWL SIZE	WEIGHT PER 50’ UNCPLD
1½”	IAP-800**	800 PSI	400 PSI	1 15/16”	15 lbs.
2½”	IAP-800	800 PSI	400 PSI	3”	16 lbs.
3”	IAP-800	800 PSI	400 PSI	317/32”	31 lbs.

IND-500™

Nitrile Rubber Through-The-Weave Construction

INDUSTRIAL 500™ FEATURES

- 100% synthetic reinforcement, totally encapsulated in a Nitrile Rubber compound utilizing a through-the-weave process
- A lightweight rubber hose construction with good heat and chemical resistance
- Couplings are imported and available in aluminium or brass
- The hose is made in the European Union to NAFH specifications
- Available in red color only

Application: Lightweight washdown hose



HOSE SIZE	SPECIFICATION NUMBER	ACCEPTANCE TEST PSI	SERVICE TEST PSI	BOWL SIZE	WEIGHT PER 50’ UNCPLD
1½”	IND-500	500 PSI	250 PSI	1¾”	11 lbs.
2½”	IND-500	500 PSI	250 PSI	213/16”	20 lbs.

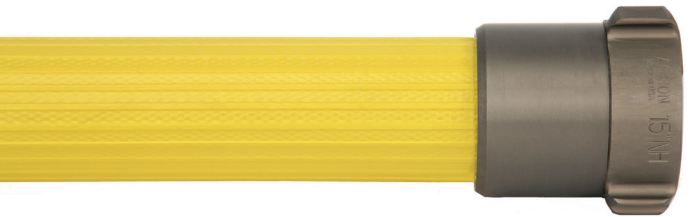
IND-600™

Nitrile Rubber Through-The-Weave Construction

IND-600™ FEATURES

- 100% synthetic reinforcement, totally encapsulated in a Nitrile Rubber compound utilizing a through-the-weave process
- A medium duty rubber hose construction with good heat and chemical resistance
- The hose is made in the European Union to NAFH specifications
- Couplings are imported and available in aluminium or brass
- Available in yellow and red color only

Available in 50, 75 and 100 foot lengths



HOSE SIZE	SPECIFICATION NUMBER	ACCEPTANCE TEST PSI	SERVICE TEST PSI	BOWL SIZE	WEIGHT PER 50’ UNCPLD
1½”	IND-600	600 PSI	300 PSI	1¾”	14 lbs.
2 1/2”	IND-600	600 PSI	300 PSI	213/16”	24 lbs.
3”	IND-600	600 PSI	300 PSI	3 3/8”	36 lbs.



IAP 600 LDH™

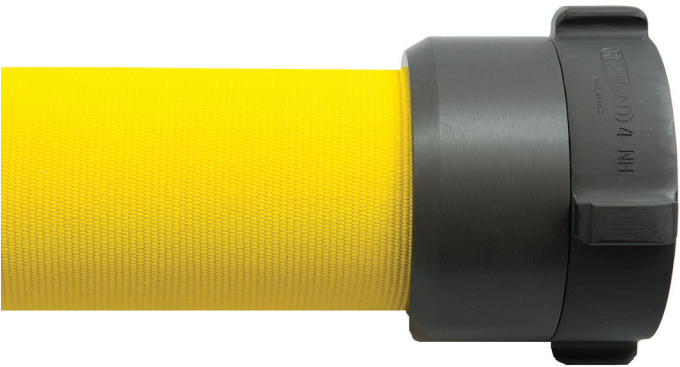
Polyurethane (TPU) Lining / Polyester Double Jacket

INDUSTRIAL ATTACK 600 PLUS LDH™ FEATURES

- **Poly-Cord™** ring-spun polyester warp yarns are combined with filament polyester filler yarns.
- Available either plain/uncoated “natural” white, or with our optional **Ultra-Shield™** high performance polymeric coating applied to seal each and every fiber in the bundle, further improving the abrasion resistance, reducing moisture and chemical absorption, and providing vivid color-coded identification
- The **Dura-Thane™** polyurethane inner lining is extremely light weight and compact, and is a National Sanitation Foundation (NSF 60) approved material for safely conveying drinking water
- The **Friction Fighter System™** in **Industrial Attack 600 Plus LDH™** creates an extremely smooth waterway surface, thereby significantly reducing friction loss and improving flow characteristics
- With less weight and more compactness than nitrile rubber-covered single jacket reinforced hose, **Industrial Attack 600 Plus LDH™** loads more tightly and requires less hose bed space, while at the same time providing more pressure capability, maneuverability and flexibility

- Designed to accomplish three separate fire fighting roles, including, Attack, Relay and Supply applications as defined by NFPA 1961, requiring a higher margin of safety than is possible with nitrile covered hose
- Couplings are manufactured in the USA and available in aluminum
- Hoses made in the USA

Applications include: Attack, Relay and Supply
Available in 25, 50, 75 and 100 foot lengths



HOSE SIZE	SPECIFICATION NUMBER	ACCEPTANCE TEST PSI	SERVICE TEST PSI	BOWL SIZE	WEIGHT PER 100' UNCPLD
4"	IAP 600 LDH	600 PSI	300 PSI	4 17/32"	77 lbs.
5"	IAP 600 LDH	600 PSI	300 PSI	5 15/32"	93 lbs.



Our state-of-the-art weaving facility.

Industrial Attack 600 LDH™

EPDM Rubber Lining / Polyester Double Jacket

INDUSTRIAL ATTACK 600 LDH™ FEATURES

- **Poly-Cord™** ring spun polyester warp yarns are combined with filament polyester filler yarns
- Available either plain/uncoated “natural” white, or with our optional **Ultra-Shield™** high-performance polyurethane coating applied to seal each and every fiber in the bundle, further improving the abrasion resistance, reducing moisture and chemical absorption, and providing vivid color-coded identification
- The EPDM rubber lining is unaffected by Ozone deterioration, and is one component in the **Friction Fighter System™**, creating an extremely smooth waterway surface
- The **Dura-Bond™** vulcanized adhesion system, which creates both a mechanical and chemical bond between the EPDM lining and the jacket, reduces the probability of delamination as is experienced with competitive adhesive bonded rubber lined constructions
- With a higher burst strength resulting from the double jacket construction, **Industrial Attack 600 LDH™** provides more pressure capability, maneuverability and ease of handling than nitrile rubber covered single reinforcing jacket hose
- **Industrial Attack 600 LDH™** hose is a very strong and flexible hose, with good heat, abrasion and chemical resistance

- Designed to accomplish three separate fire fighting roles including Attack, Relay and Supply applications as defined by NFPA 1961, requiring a higher margin of safety than is possible with nitrile covered hose.
- Couplings are manufactured in the USA and available in aluminum
- Hoses made in the USA

Applications include: Attack, Relay and Supply
Available in 25, 50, 75 and 100 foot lengths



HOSE SIZE	SPECIFICATION NUMBER	ACCEPTANCE TEST PSI	SERVICE TEST PSI	BOWL SIZE	WEIGHT PER 100' UNCPLD
4"	Industrial Attack 600	600 PSI	300 PSI	4 17/32"	79 lbs.
5"	Industrial Attack 600	600 PSI	300 PSI	5 15/32"	97 lbs.



The ring twister combines multiple piles of high tenacity filament polyester yarns.

Outback 600™

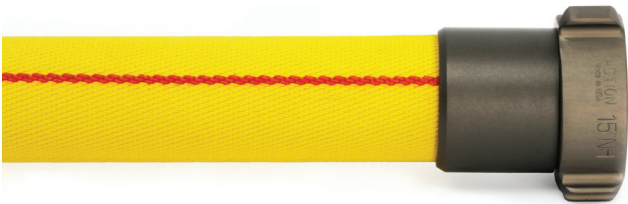
Polyurethane (TPU) Lining / Polyester Single Jacket

OUTBACK 600™ FEATURES

- **Poly-Cord™** ring spun polyester warp yarns are combined with filament polyester filler yarns
- Fabric construction features a very fine twill weave for improved abrasion and snagging resistance in wildland fire fighting situations
- High visibility yellow **Ultra-Shield™** polymeric coating seals each and every fiber in the bundle, further improving abrasion resistance, reducing moisture and chemical absorption, and providing vivid color-coded identification
- The **Dura-Thane™** polyurethane inner lining is extremely strong and durable, while maintaining a lightweight and compact profile

- Immune to the effects of mildew and rot, requiring less maintenance after use
- Designed to withstand the rigors of the “Outback”, as well as other wild land fire fighting situations
- Both the hose and couplings are Made in the USA

Applications: Forestry, Wildland, and CAFS
Available in 50 and 100 foot lengths



HOSE SIZE	SPECIFICATION NUMBER	ACCEPTANCE TEST PSI	SERVICE TEST PSI	BOWL SIZE	WEIGHT PER 100' UNCPLD
1"	OB-600	600 PSI	300 PSI	1 1/4"	10 lbs.
1 1/2"	OB-600	600 PSI	300 PSI	1 3/4"	14 lbs.

Outback 600 HD™

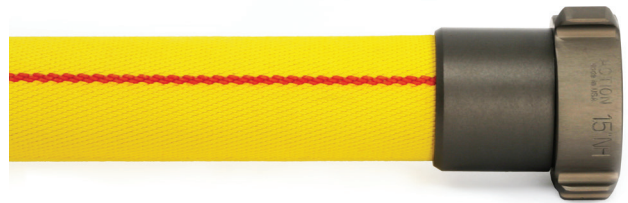
EPDM Lining / Polyester Single Jacket

OUTBACK 600 HD™ FEATURES

- **Poly-Cord™** ring spun polyester warp yarns are combined with filament polyester filler yarns
- Fabric construction features a very fine twill weave for improved abrasion and snagging resistance in wildland fire fighting situations
- High visibility Yellow **Ultra-Shield™** polymeric coating seals each and every fiber in the bundle, further improving abrasion resistance, reducing moisture and chemical absorption, and providing vivid color-coded identification
- The EPDM rubber lining is unaffected by Ozone deterioration, and is one component in the **Friction Fighter System™**, creating an extremely smooth waterway surface, thereby reducing friction loss and improving nozzle performance
- The **Dura-Bond™** vulcanized fusing system, which creates both a mechanical and chemical permanent bond between the EPDM lining and the jacket, reduces the possibility of

- delamination as is experienced with the competition's use of adhesives to glue the lining to the jacket in rubber lined constructions
- Immune to the effects of mildew and rot, requiring less maintenance after use
- Designed to withstand the rigors of the “Outback”, as well as other wild land fire fighting situations
- Both the hose and couplings are Made in the USA

Applications: Forestry, Wildland, and CAFS
Available in 50 and 100 foot lengths



HOSE SIZE	SPECIFICATION NUMBER	ACCEPTANCE TEST PSI	SERVICE TEST PSI	BOWL SIZE	WEIGHT PER 100' UNCPLD
1"	OB-600 HD	600 PSI	300 PSI	1 1/4"	12 lbs.
1 1/2"	OB-600 HD	600 PSI	300 PSI	1 3/4"	17 lbs.

NAFH-187™ Type I

Polyurethane (TPU) Lining / Filament Polyester Single Jacket

NAFH-187™ Type I FEATURES

- Synthetic filament polyester warp and filler yarns are unaffected by the effects of mildew and rot, requiring less maintenance after use
- The **Dura-Thane™** polyurethane inner lining is extremely strong and durable, while maintaining a lightweight and compact profile
- Meets all requirements of the U.S. Forest Service Standard 5100-187 for Type I construction
- Both the hose and couplings are Made in the USA

Applications: Forestry, Wildland, and CAFS
Available in 50 and 100 foot lengths



Hose will be marked “450 PSI Working Pressure” in accordance with USDA Forest Service Specification 5100-187 Type I

HOSE SIZE	SPECIFICATION NUMBER	ACCEPTANCE TEST PSI	SERVICE TEST PSI	BOWL SIZE	WEIGHT PER 100' UNCPLD
1"	NAFH-187	500 PSI	250 PSI	1 3/16"	9.5 lbs.
1 1/2"	NAFH-187	500 PSI	250 PSI	1 3/4"	14 lbs.

NAFH-187™ Type II

Polyurethane (TPU) Lining / Polyester Single Jacket

NAFH-187™ Type II FEATURES

- **Poly-Cord™** ring spun polyester warp yarns are combined with filament polyester filler yarns
- Fabric construction features a very fine twill weave for improved abrasion and snagging resistance in wild land fire fighting situations
- High visibility Yellow **Ultra-Shield™** polymeric coating seals each and every fiber in the bundle, further improving the abrasion resistance, reducing moisture and chemical absorption, and providing vivid color coded identification
- The **Dura-Thane™** polyurethane inner lining is extremely strong and durable, while maintaining a lightweight and compact profile
- Immune to the effects of mildew and rot, requiring less maintenance after use

- Meets all requirements of the U.S. Forest Service Standard 5100-187 for Type II construction
- Both the hose and couplings are Made in the USA

Applications: Forestry, Wildland, and CAFS
Available in 50 and 100 foot lengths



Hose will be marked “450 PSI Working Pressure” in accordance with USDA Forest Service Specification 5100-187 Type II

HOSE SIZE	SPECIFICATION NUMBER	ACCEPTANCE TEST PSI	SERVICE TEST PSI	BOWL SIZE	WEIGHT PER 100' UNCPLD
1"	NAFH-187 II	600 PSI	300 PSI	1 3/16"	10 lbs.
1 1/2"	NAFH-187 II	600 PSI	300 PSI	1 3/4"	14 lbs.

Mil-H-24606™

EPDM Rubber Lining / Polyester Double Jacket

FEATURES

- **Poly-Cord™** ring spun polyester warp yarns are combined with filament polyester filler yarns.
- Available with our **Ultra-Shield™** high-performance polyurethane coating applied to seal each and every fiber in the bundle, further improving the abrasion resistance, reducing moisture and chemical absorption, and providing vivid color-coded identification.
- The EPDM rubber lining is unaffected by Ozone deterioration, and is one component in the **Friction Fighter System™** creating an extremely smooth waterway surface, thereby reducing friction loss and improving nozzle performance.
- **The Dura-Bond™** vulcanized adhesion system, which creates both a mechanical and chemical bond between the EPDM lining and the jacket, reduces the probability of delamination as is experienced with competitive adhesive bonded rubber lined constructions.
- The result is a very strong, flexible, and “Tuff” hose, with good heat and chemical resistance.
- Meets and exceeds all specifications for **Mil-H-24606 EPDM Rubber Lined**
- Couplings are available in brass and manufactured in the USA
- Hose is made in USA

Available in 25, 50, 75 and 100 foot lengths

HOSE SIZE	SPECIFICATION NUMBER	ACCEPTANCE TEST PSI	SERVICE TEST PSI	BOWL SIZE	WEIGHT PER 50' CPLD BRASS
1½"	MIL-H-24606	600 PSI	300 PSI	115/16"	15 lbs.
1¾"	MIL-H-24606	600 PSI	300 PSI	2 1/8"	21 lbs.
2½"	MIL-H-24606	600 PSI	300 PSI	3"	34 lbs.

Mil-H-24606™

Polyurethane (TPU) Lining / Polyester Double Jacket

FEATURES

- **Poly-Cord™** ring spun polyester warp yarns are combined with filament polyester filler yarns.
- Available with our **Ultra-Shield™** high-performance polyurethane coating applied to seal each and every fiber in the bundle, further improving the abrasion resistance, reducing moisture and chemical absorption, and providing vivid color-coded identification.
- **The Dura-Thane™** polyurethane inner lining is extremely light weight and compact and is a National Sanitation Foundation (NSF 60) approved material for safely conveying drinking water.
- The result is a very strong, flexible, and “Tuff” hose, with good heat and chemical resistance.
- Meets and exceeds all specifications for **Mil-H-24606 Polyurethane TPU Lined**
- Couplings are available in brass and manufactured in the USA
- Hose is made in USA

Available in 25, 50, 75 and 100 foot lengths

HOSE SIZE	SPECIFICATION NUMBER	ACCEPTANCE TEST PSI	SERVICE TEST PSI	BOWL SIZE	WEIGHT PER 50' CPLD BRASS
1½"	MIL-H-24606-TPU	600 PSI	300 PSI	115/16"	15 lbs.
1¾"	MIL-H-24606-TPU	600 PSI	300 PSI	2 1/8"	15 lbs.
2 1/2"	MIL-H-24606-TPU	600 PSI	300 PSI	3"	29 lbs.
4"	MIL-H-24606-TPU	600 PSI	300 PSI	417/32"	54 lbs.

Ultra-Shield™ Coating

Our exclusive **Ultra-Shield™** high performance polymeric coating provides improved functionality to the hose constructions, while also providing a means of vivid color coding in order to simplify hose identification.

Ultra-Shield™ is applied in a multi-step process, which starts by thoroughly impregnating the outer jacket under tremendous pressure in order to completely saturate the fabric cross-section with the polymer rich polymeric coating, followed by heat set curing in a two-stage process for maximum adhesion and durability.

The **Ultra-Shield™** formulation seals each and every fiber in the yarn bundle to create a very tough and ultra-violet light stable polymeric matrix, further improving abrasion resistance, reducing moisture absorption, and increasing the chemical resistance of our products. In addition, the **Ultra-Shield™** coatings are available in a wide range of vivid colors to enable color-coded identification methods.

Ultra-Shield™ is standard on America's Finest products and is optional on most other woven jacket items.

Formulated, developed and manufactured by North American Fire Hose Corporation, **Ultra-Shield™** is the most effective and the highest quality coating system available in the industry today.

STANDARD COLORS	
Yellow	Red
Orange	

AVAILABLE UPON REQUEST	
Blue	Black
Green	Tan



Ultra-Shield™ is standard on the following woven jacket constructions:

Outback 600™ (Available in yellow.)

Outback 600 HD™ (Available in yellow.)

NAFH-187™ Type II (Available in yellow.)

Ultra-Shield™ is available on the following woven jacket constructions:

P-300-S™

P-500-S™

P-600-S™

Industrial Attack 600™

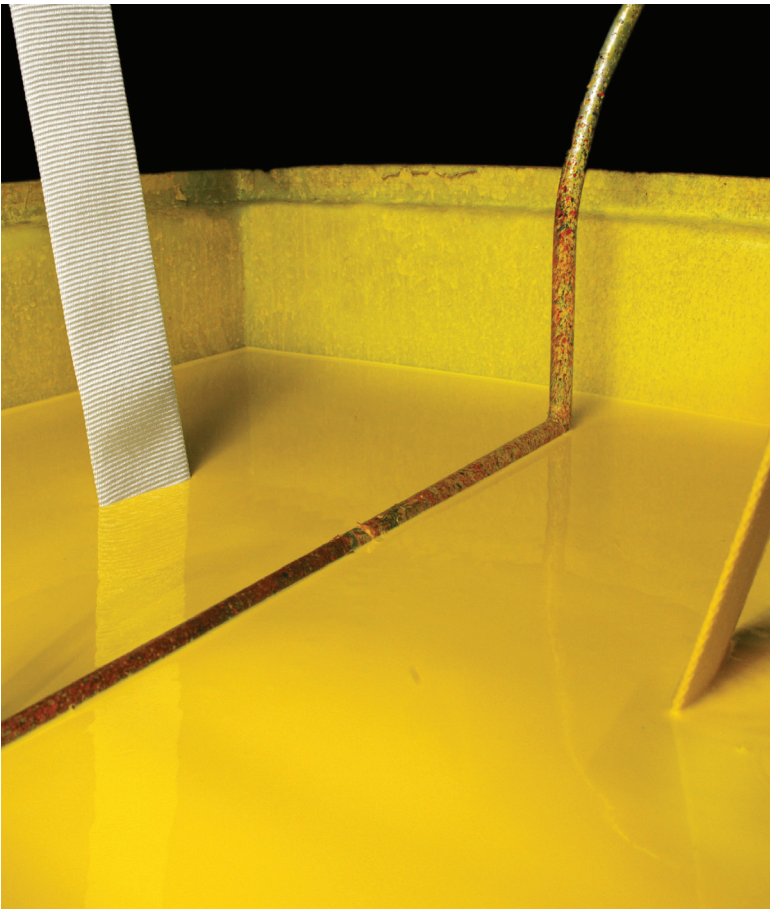
Industrial Attack 800™

Industrial Attack 800 Plus™

Industrial Attack 600 LDH™

Industrial Attack 600 Plus LDH™

Mil-H-24606™



Woven jackets begin the Ultra-Shield™ impregnation process.

Couplings

Features and options

- All municipal brass and aluminum couplings are manufactured in the USA, with domestic components only. We will not offer any products that are “Assembled in the USA” with substandard, imported components and manufacturing tolerances.
- Proof-of-origin of domestic manufacturing will be provided upon request.
- Couplings and components are fully compliant with all requirements of NFPA 1963.

Extruded aluminum couplings

- All extruded aluminum couplings are produced with domestically extruded, seamless 6061-T6 materials conforming to ASTM B-221, which are then hardcoat anodized in strict compliance with MIL-A-8625 Type III, Class 1 standards for superior resistance to abrasion, corrosion and electrolysis, as well as preventing excessive thread wear in use.
- Imported port hole or seamed “architectural” aluminum stock is strictly prohibited due to the inherent weakness and lack of reliability experienced with such materials.
- Available in standard rocker lug configuration for 1" through 5" hose sizes, as well as 1" through 1 1/2" USDA Forestry types.

Re-attachable Storz couplings

- All re-attachable forged Storz couplings feature the same extruded aluminum materials for the tail piece and collars as referenced for the extruded aluminum couplings, which are then combined with forged 6061-T6 aluminum Storz heads for superior strength and reliability.
- Aluminum components are hardcoat anodized for durability.
- A stainless steel locking lever prevents accidental separation of hose while in use.

Cast brass expansion ring couplings

- All brass couplings are produced from high grade red brass components (conforming to ASTM B584 or B505 standards), which are 100% cast, machined and assembled in the USA.
- Standard rocker lug configuration.



**NORTH AMERICAN
FIRE HOSE
CORPORATION**



 **FAMILY OWNED
AMERICAN MADE**

The difference is... ***your*** margin of safety.

NORTH AMERICAN FIRE HOSE

910 E. Noble Way · Santa Maria, CA 93454

T 805-922-7076 · F 805-922-0086

NAFHC.com · info@NAFHC.com

